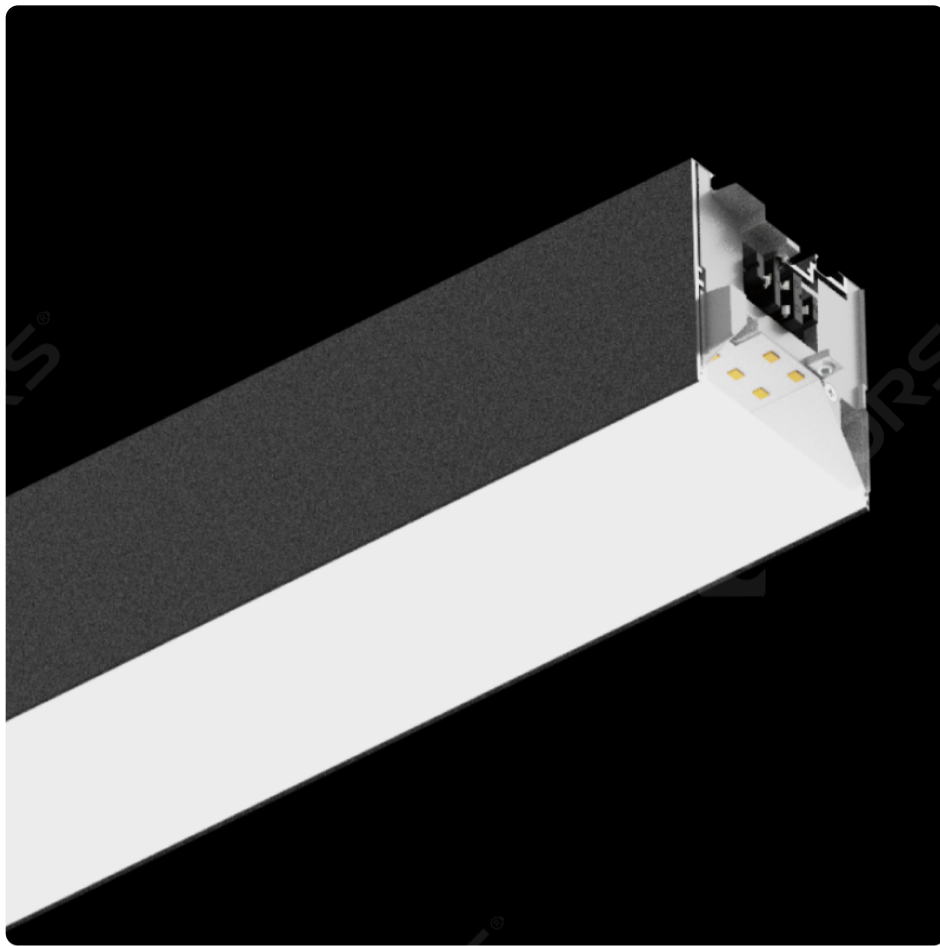


LINE LINK Pendant&Surface

MS70FD





MS70FD

Basic Parameters

Material	AL6063-T5, spraying surface
IP Grade	IP20
Warranty	5 years

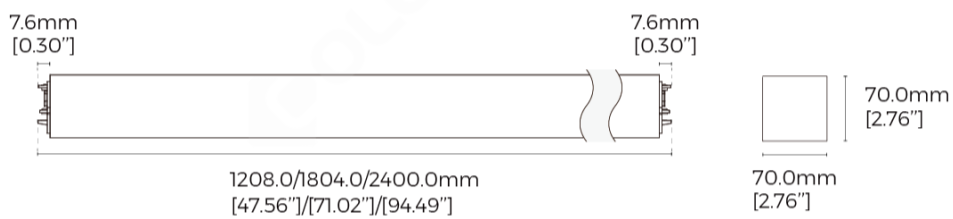
Electrical Parameters

Input Voltage	AC220-240V
Control	Non-Dimming,1-10V Dimming,DALI Dimming

Optical Parameters

Version	Regular,High efficiency,Regular-3 CCT Dial Switch,High efficiency-3 CCT Dial Switch
Length	1200mm,1800mm,2400mm
CRI	>80,>90
CCT	2700K,3000K,4000K,6500K,3000K-4200K-6500K
Beam Angle	100°

Dimensions



Luminaire Parameters

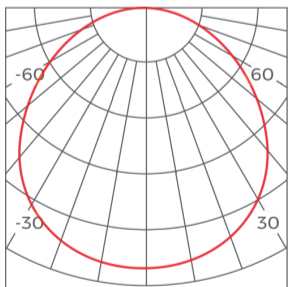
Version	Size	Power(W)	PCB Current(A)	CRI	CCT	Lumens(LM) @White, Sliver	Lumens(LM) @Black
Regular-3 CCT Dial Switch	1800	70	1.55	>80	4200K	8400	7560
Regular-3 CCT Dial Switch	2400	90	2	>80	4200K	10800	9720
Regular-3 CCT Dial Switch	1200	47	1.05	>90	4200K	4850.4	4365.36
Regular-3 CCT Dial Switch	1800	70	1.55	>90	4200K	7224	6501.6
Regular-3 CCT Dial Switch	2400	90	2	>90	4200K	9288	8359.2
Regular-3 CCT Dial Switch	1200	47	1.05	>80	3000K	5170	4653
Regular-3 CCT Dial Switch	1800	70	1.55	>80	3000K	7700	6930
Regular-3 CCT Dial Switch	2400	90	2	>80	3000K	9900	8910
Regular-3 CCT Dial Switch	1200	47	1.05	>90	3000K	4446.2	4001.58
Regular-3 CCT Dial Switch	1800	70	1.55	>90	3000K	6622	5959.8
Regular-3 CCT Dial Switch	2400	90	2	>90	3000K	8514	7662.6
Regular-3 CCT Dial Switch	1200	47	1.05	>80	6500K	5170	4653
Regular-3 CCT Dial Switch	1800	70	1.55	>80	6500K	7700	6930
Regular-3 CCT Dial Switch	2400	90	2	>80	6500K	9900	8910
Regular-3 CCT Dial Switch	1200	47	1.05	>90	6500K	4446.2	4001.58
Regular-3 CCT Dial Switch	1800	70	1.55	>90	6500K	6622	5959.8
Regular-3 CCT Dial Switch	2400	90	2	>90	6500K	8514	7662.6

Regular	1200	47	1.05	>80	4000K	5405	4864.5
Regular	1800	70	1.55	>80	4000K	8050	7245
Regular	2400	90	2	>80	4000K	10350	9315
Regular	1200	47	1.05	>90	4000K	4648.3	4183.47
Regular	1800	70	1.55	>90	4000K	6923	6230.7
Regular	2400	90	2	>90	4000K	8901	8010.9
Regular	1200	47	1.05	>80	2700K	4594.25	4134.825
Regular	1800	70	1.55	>80	2700K	6842.5	6158.25
Regular	2400	90	2	>80	2700K	8797.5	7917.75
Regular	1200	47	1.05	>90	2700K	3951.055	3555.9495
Regular	1800	70	1.55	>90	2700K	5884.55	5296.095
Regular	2400	90	2	>90	2700K	7565.85	6809.265
Regular	1200	47	1.05	>80	3000K	4864.5	4378.05
Regular	1800	70	1.55	>80	3000K	7245	6520.5
Regular	2400	90	2	>80	3000K	9315	8383.5
Regular	1200	47	1.05	>90	3000K	4183.47	3765.123
Regular	1800	70	1.55	>90	3000K	6230.7	5607.63
Regular	2400	90	2	>90	3000K	8010.9	7209.81
Regular	1200	47	1.05	>80	5000K	5405	4864.5
Regular	1800	70	1.55	>80	5000K	8050	7245
Regular	2400	90	2	>80	5000K	10350	9315
Regular	1200	47	1.05	>90	5000K	4648.3	4183.47
Regular	1800	70	1.55	>90	5000K	6923	6230.7
Regular	2400	90	2	>90	5000K	8901	8010.9
Regular	1200	47	1.05	>80	6500K	5405	4864.5
Regular	1800	70	1.55	>80	6500K	8050	7245
Regular	2400	90	2	>80	6500K	10350	9315
Regular	1200	47	1.05	>90	6500K	4648.3	4183.47
Regular	1800	70	1.55	>90	6500K	6923	6230.7
Regular	2400	90	2	>90	6500K	8901	8010.9
High-Efficiency	1200	36	0.8	>80	4000K	5400	4860
High-Efficiency	1800	54	1.2	>80	4000K	8100	7290
High-Efficiency	2400	72	1.6	>80	4000K	10800	9720
High-Efficiency	1200	36	0.8	>90	4000K	4968	4471.2
High-Efficiency	1800	54	1.2	>90	4000K	7452	6706.8
High-Efficiency	2400	72	1.6	>90	4000K	9936	8942.4
High-Efficiency	1200	36	0.8	>80	2700K	5130	4617
High-Efficiency	1800	54	1.2	>80	2700K	7695	6925.5
High-Efficiency	2400	72	1.6	>80	2700K	10260	9234
High-Efficiency	1200	36	0.8	>90	2700K	4719.6	4247.64
High-Efficiency	1800	54	1.2	>90	2700K	7079.4	6371.46
High-Efficiency	2400	72	1.6	>90	2700K	9439.2	8495.28
High-Efficiency	1200	36	0.8	>80	3000K	5400	4860
High-Efficiency	1800	54	1.2	>80	3000K	8100	7290
High-Efficiency	2400	72	1.6	>80	3000K	10800	9720
High-Efficiency	1200	36	0.8	>90	3000K	4968	4471.2
High-Efficiency	1800	54	1.2	>90	3000K	7452	6706.8
High-Efficiency	2400	72	1.6	>90	3000K	9936	8942.4
High-Efficiency	1200	36	0.8	>80	5000K	5400	4860
High-Efficiency	1800	54	1.2	>80	5000K	8100	7290
High-Efficiency	2400	72	1.6	>80	5000K	10800	9720

High-Efficiency	1200	36	0.8	>90	5000K	4968	4471.2
High-Efficiency	1800	54	1.2	>90	5000K	7452	6706.8
High-Efficiency	2400	72	1.6	>90	5000K	9936	8942.4
High-Efficiency	1200	36	0.8	>80	6500K	5400	4860
High-Efficiency	1800	54	1.2	>80	6500K	8100	7290
High-Efficiency	2400	72	1.6	>80	6500K	10800	9720
High-Efficiency	1200	36	0.8	>90	6500K	4968	4471.2
High-Efficiency	1800	54	1.2	>90	6500K	7452	6706.8
High-Efficiency	2400	72	1.6	>90	6500K	9936	8942.4
High efficiency-3 CCT Dial Switch	1200	36	0.8	>80	4200K	5220	4698
High efficiency-3 CCT Dial Switch	1800	54	1.2	>80	4200K	7830	7047
High efficiency-3 CCT Dial Switch	2400	72	1.6	>80	4200K	10440	9396
High efficiency-3 CCT Dial Switch	1200	36	0.8	>90	4200K	4802.4	4322.16
High efficiency-3 CCT Dial Switch	1800	54	1.2	>90	4200K	7203.6	6483.24
High efficiency-3 CCT Dial Switch	2400	72	1.6	>90	4200K	9604.8	8644.32
High efficiency-3 CCT Dial Switch	1200	36	0.8	>80	3000K	5040	4536
High efficiency-3 CCT Dial Switch	1800	54	1.2	>80	3000K	7560	6804
High efficiency-3 CCT Dial Switch	2400	72	1.6	>80	3000K	10080	9072
High efficiency-3 CCT Dial Switch	1200	36	0.8	>90	3000K	4636.8	4173.12
High efficiency-3 CCT Dial Switch	1800	54	1.2	>90	3000K	6955.2	6259.68
High efficiency-3 CCT Dial Switch	2400	72	1.6	>90	3000K	9273.6	8346.24
High efficiency-3 CCT Dial Switch	1200	36	0.8	>80	6500K	5220	4698
High efficiency-3 CCT Dial Switch	1800	54	1.2	>80	6500K	7830	7047
High efficiency-3 CCT Dial Switch	2400	72	1.6	>80	6500K	10440	9396
High efficiency-3 CCT Dial Switch	1200	36	0.8	>90	6500K	4802.4	4322.16
High efficiency-3 CCT Dial Switch	1800	54	1.2	>90	6500K	7203.6	6483.24
High efficiency-3 CCT Dial Switch	2400	72	1.6	>90	6500K	9604.8	8644.32

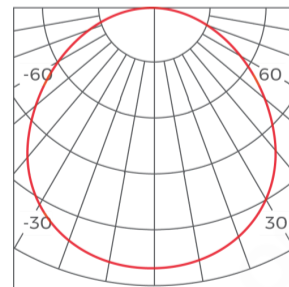
Light Distribution

Regular Version



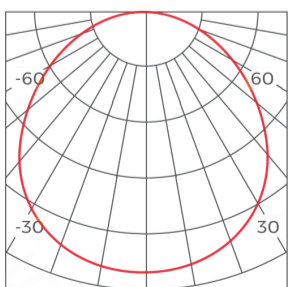
h(m)	D(cm)	E(lx)
1	249	2084
2	498	521
3	746	232
4	995	130

High efficiency Version



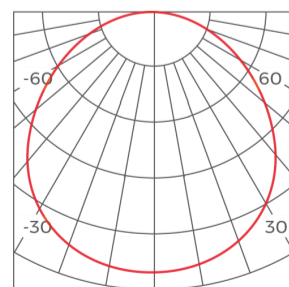
h(m)	D(cm)	E(lx)
1	249	2378
2	498	594
3	748	264
4	997	149

Regular-3CCT Dial Switch Version



h(m)	D(cm)	E(lx)
1	249	2107
2	498	527
3	747	234
4	996	132

High efficiency-3CCT Dial Switch Version



h(m)	D(cm)	E(lx)
1	249	2530
2	498	632
3	747	280
4	996	132

Common Accessories

Standard Corner



MS70FD-L90

Applicable product model: MS70FD
Installation method: L-shaped 90° splicing
Material process: AL6063-T5/spraying
Coating: Black(RAL9006), White(RAL9003)
Diffuser Nature: Diffuser
Light source: Constant Current Rigid PCB
Size: L300*W70*H70mm

Power feeder



CM-27

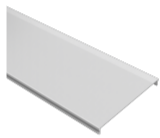
Applicable product model: MS50/MH50/MS70/MH70
Type: Non-dimming
Input line(3PIN)
Material process: Wiring cover: AL6061/Input line: PVC
Size: Wiring cover: 113*23.2*1.5mm/Input line: 2200*φ6mm
Quantity: 1PCS/set
Others: Including 1pcs wiring cover+1pcs input line



CM-28

Applicable product model: MS50/MH50/MS70/MH70
Type: Dimming
Input line(5PIN)
Material process: Wiring cover: AL6061/Input line: PVC
Size: Wiring cover: 113*23.2*1.5mm/Input line: 2200*φ7.2mm
Quantity: 1PCS/set
Others: Including 1pcs wiring cover+1pcs input line

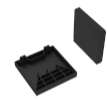
Cover



CV-MS70FD

Applicable product model: MS70FD/MH70FD(suitable for down-lighting)
Diffuser Nature: Diffuser
Material process: PC
Light transmittance: 80%
Size: 50m/Reel: 50000*65.8*5.7mm
Other: Fire protection rating UL94-V2;

End cap accessory



EC-MS70

Applicable product model: MS70/MH70
Material process: ADC12/powder-coated
Size: L70.2*W70.7*H17mm
Quantity: 2PCS/set

Installation accessory



PN(E)-D

Applicable product model: LINE ECO series
Installation method: Pendant
Material process: Nickel plating
Size: /
Quantity: 2PCS/SET
Other: 2 meter wire rope 2PCS, cable locker 2PCS, cable holder 2PCS, M5 flat head Phillips screws 2PCS, M4*35mm screws 2PCS, expansion tube 2PCS



PN-DXX

Applicable product model: LS1911C/LS1911K/LS3535/LS5050/LS3360/LS4067/LS5470(F)/LS7977/LT60/BH3360/BH5470/BH7977/BS3360/BS5470/BS7977/LS5470(F)/LS7977/LT60/LINE40 series product/LINE60 series product/TLS-R6X0 track
Installation method: Pendant
Material process: Pearl Chrome
Size: /
Quantity: 2PCS/set
Other: Junction box not included, 2 pcs pendant cable accessory, pendant cable length 4m, rectangular screw model.



PY(E)-D

Applicable product model: MS35/MH35/MS50/MH50/MS70/MH70
Installation method: Junction Box (pendant wire)
Material process: SPCC/Spraying surface
Size: Box: D80*30*1mm, Pendant wire: D1.5*2000/4000mm
Quantity: 1 set
Other: Including junction box, 2PCS wire rope, wire rope 2M/4M length optional

Packing

Size (mm/box)	Quantity /box	QTY/CTN	NW (kg/box)	N. WT (ctn)	G.WT (ctn)	Size (cm/carton)	Product Size (mm)
1205*95*80mm	1	4	1.75	7	8.3	1220*185*175mm	1208*70*70mm
1815*95*80mm	1	4	2.6	10.4	12.1	1820*185*175mm	1803*70*70mm
2410*95*80mm	1	4	3.55	14.2	16.3	2415*185*175mm	2399*70*70mm